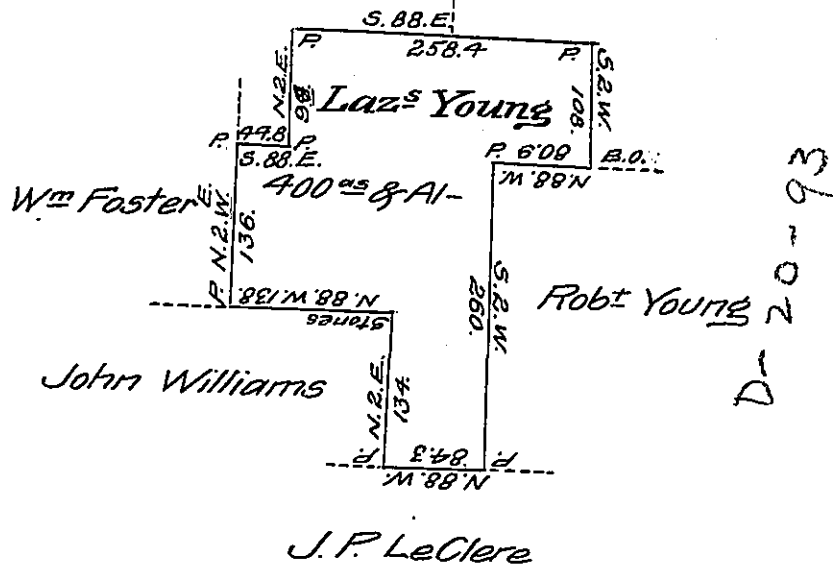


D-20-94 I-104
Phebe Young Cath^e Bower



Draft of a tract of land, Situate in the township of Wilkesbarre in Luzerne County adjoining lands of Robert Young and others, containing four hundred acres of land besides the usual allowance of Six per Centum for Roads &c. — Surveyed for Lazarus Young forty or forty one years ago, appears by blocking the line trees upon the ground—and resurveyed the 8th day of May A^d Dⁱ 1839 by virtue of his warrant dated the 8th day of January 1793.

Z.H. Stevens D.S.

To Jacob Sallade Esqr. }
Surveyor General } for Luzerne County

Approved & Certified by me this 17. Jan^y 1840

Henry Colt D.S.

IN TESTIMONY that the above is a copy of the original remaining on file in the Department of Internal Affairs of Pennsylvania, made conformably to an Act of Assembly approved the 16th day of February, 1833, I have hereunto set my Hand and caused the Seal of said Department to be affixed at Harrisburg, this seventh day of September 1907.

Henry Houck
Secretary of Internal Affairs.